

Dear Lynn & Ken,

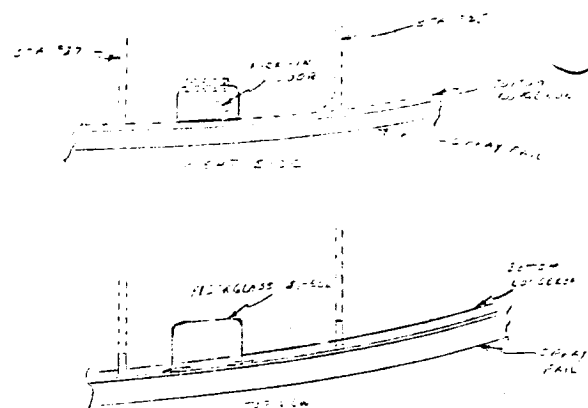
I have been trying to get this off for a couple of months. First I had trouble finding time to get at the typewriter then I had trouble drawing the flush step to show it as I wanted to. Anyway, my wife, being very short, will need a step to get into our bird. Our Subaru Brat step into the rear gave me the idea. The logical location is about midway between station 25 and 37. You can install the step on both sides or just the passenger side, whatever your needs are. The base block is made from a piece of 5/4 pine. It may be solid or drilled with lightening hole, in which case it should have a piece of 3/32" plywood covering the block. The shell can be made over a block carved to shape, waxed and layed up with fiberglass. Two layers of 2 1/2 oz cloth will work very well. You must have a good waterproof glue joint between the shell, the step block and the inner surface of the fuselage skin. The door can be made from 3/32" plywood the same as the skin or it can be made from .032 aluminum. A spring loaded piano hinge is mounted at the top with countersunk 6-32 machine screws. Step must be glued to the back of the door at each side so the door will be held flush with the skin by the spring pressure.

The other sketch is sort of a belt/suspender type addition to the hull drain shown on sheet #12. Knowing the tendency of pipe plugs to stick at times I decided not to rely on the Epoxy alone to hold the tubing in the block. I drilled 1/8" holes at 90 degrees about 1/8" below the top end of the tube. Four pieces of 1/8" were cut in the block under the rear floorboards, deep enough to accept the wire brongs. When the block is glued up against the 1/16" plywood floor, fill the grooves well with Epoxy. It might just prevent the pipe from tearing loose if the drain plug should seize.

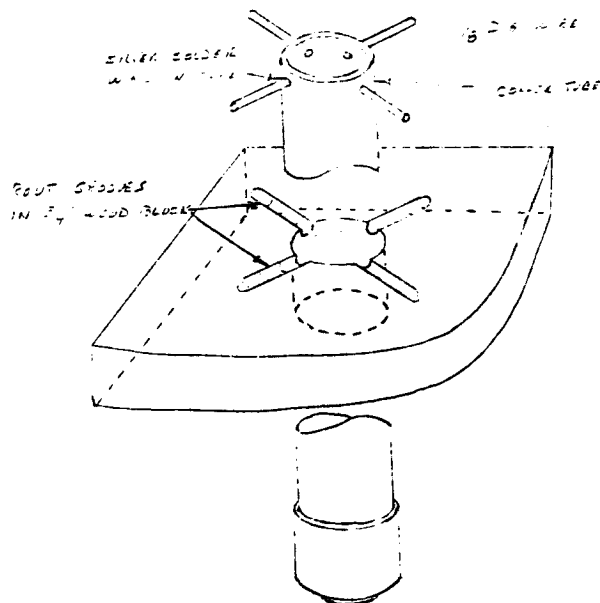
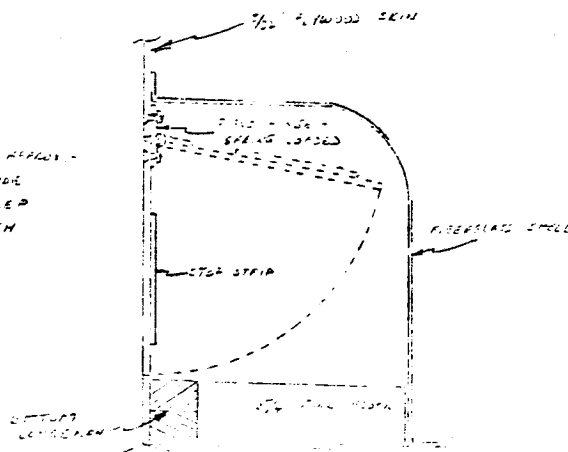
I get the impression either building is slowing down or people are too busy to write. I'll try to do better next time, on getting hints in earlier.

Carl Cooper
Box 169
Indian Lake, NY 12842 (518-648-5539)

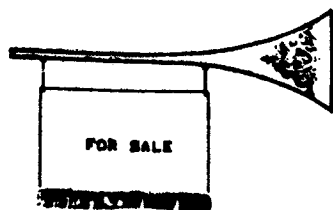
COSMETIC EXTENDED STEP



SIZE REFERENCE
5" WIDE
5" DEEP
4" HIGH



HULL DRAIN TUBE PER DWG #12



FOR SALE -- Fuselage for sale or trade for able airplane. Lots of extras.

Nico Rodriguez, 2123 Amanda Way, Sacramento, Ca 95822 (916) 395-5919