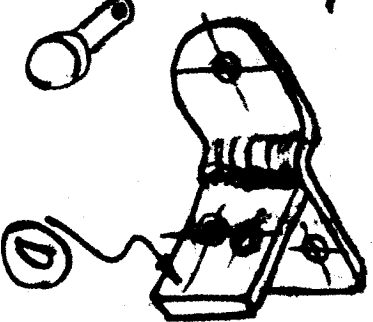


# Lifting Cylinders for Canopy

BRACKET to be fixed  
to canopy  
FRAME. One (1) on  
each side.

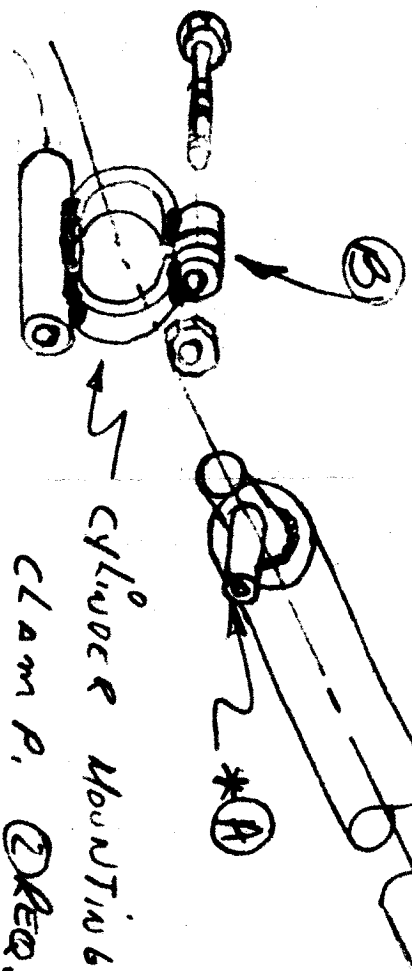
② Req.  
4130 - .063"



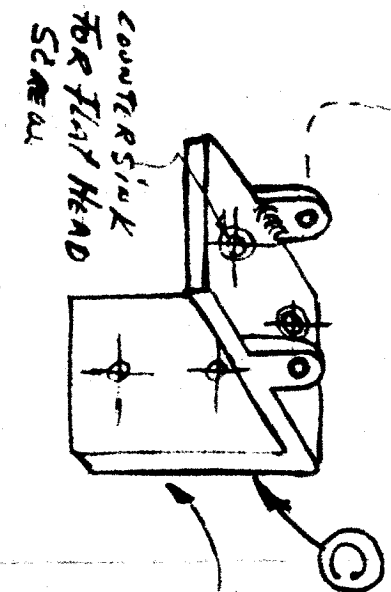
② Req. (GAS CYLINDERS)  
Buy it from any car  
scrap yard.

All mounting holes  $\frac{3}{16}$ "

① \* Cut cylinder to size  
& weld a flange with a 1/2" bit.  
in - bicycle air tube  
valve to be used to fill  
cylinder to canopy with



cylinder mounting  
clamp. ② Req.



Mount this bracket  
to main spar  
.080 - 4130  
② Req.